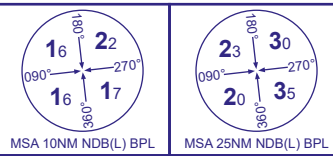


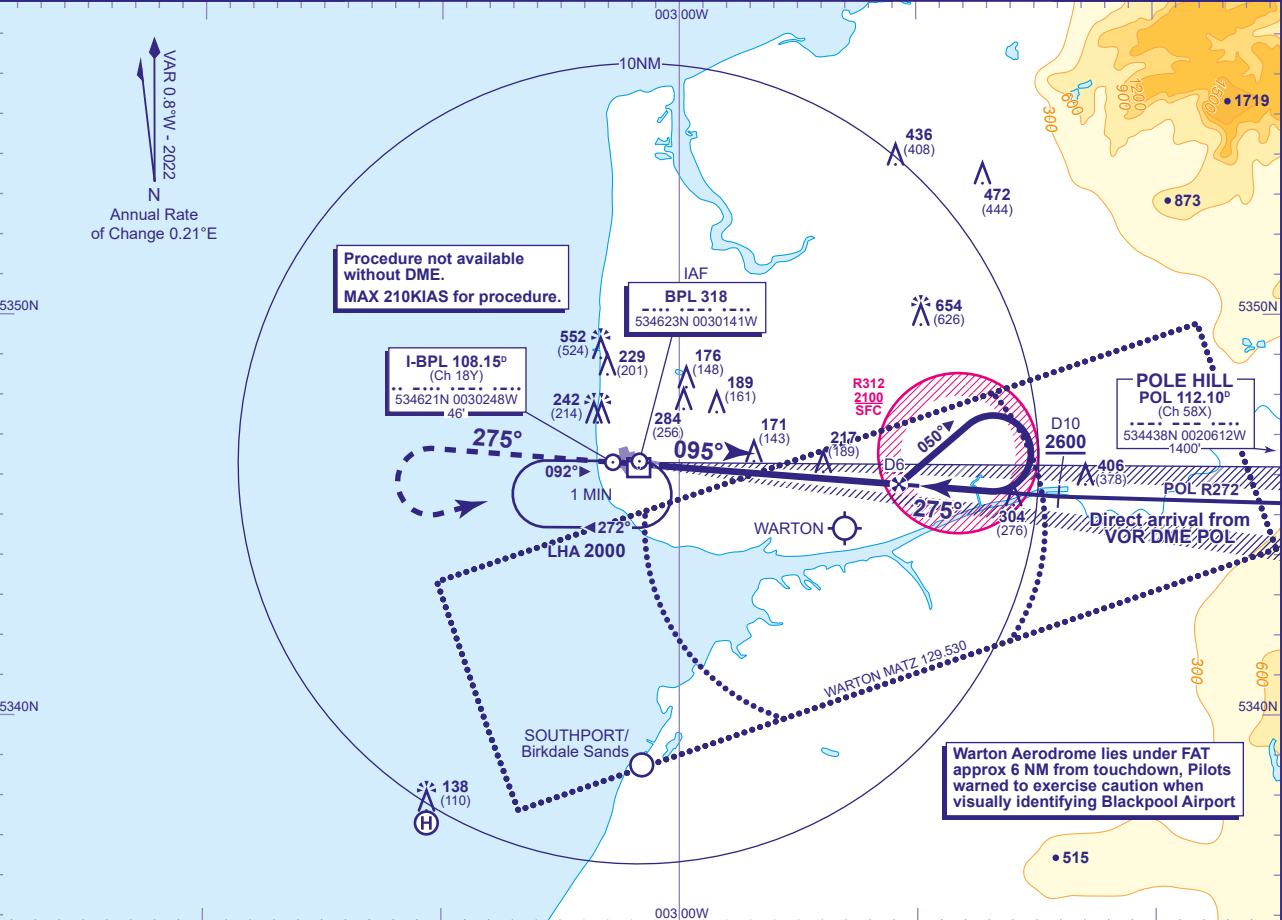
INSTRUMENT APPROACH CHART - ICAO

BLACKPOOL
ILS/DME
RWY 28
(ACFT CAT A,B,C,D)



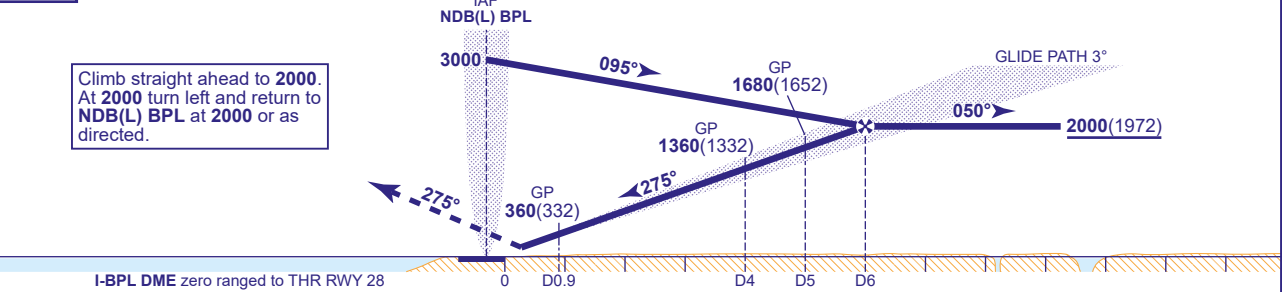
APP	119.955	BLACKPOOL APPROACH	AD ELEVATION	34
TWR	119.955	BLACKPOOL TOWER	THR ELEVATION	28
ATIS	127.205	BLACKPOOL INFORMATION	OBSTACLE ELEVATION	654 AMSL (626) (ABOVE THR)
			BEARINGS ARE MAGNETIC	

TRANSITION ALTITUDE	3000
---------------------	------



RECOMMENDED PROFILE GLIDE PATH 3°, 320FT/NM					
DME I-BPL	5	4	3	2	1
ALT(HGT)	1680(1652)	1360(1332)	1040(1012)	720(692)	400(372)

RDH 55 Shuttle in hold if necessary.



I-BPL DME zero ranged to THR RWY 28					
Aircraft Category		A	B	C	D
OCA (OCH)	CAT I	171(143)	181(153)	193(165)	205(177)
VM(C)OCA (OCH AAL)	Total Area	580(546)	830(796)	930(896)	930(896)
	South of RWY 10/28	N/A	N/A	N/A	N/A

DIRECT ARRIVAL FROM VOR DME POL
(Subject to ATC approval). Depart VOR DME POL on R272 and descend **not below 2600**. Request direct approach from ATC and continue descend **not below 2600** to intercept LOC inbound at I-BPL DME 10. When established continue **not below 2000**(1972) and continue as for main procedure.

- NOTE 1** During reversal procedure, aircraft should not proceed beyond I-BPL DME 13.
NOTE 2 This procedure has no outer marker. Warton outer marker (75Mhz) may be received in the final approach area at approximately I-BPL DME 9.
NOTE 3 An incorrect MM indication may be received at I-BPL DME 6, due to intersection with Warton ILS.
NOTE 4 Lowest altitude to commence procedure from holding or missed approach is **2000**.
NOTE 5 Aircraft not permitted below **1670** over EGR312 for the purpose of landing at Blackpool.

CHANGE (5/24): LOC I-BPL COORDINATES CORRECTED.